

EMS & Custom Power Modules

Custom Solutions for leading companies since 1986

Engineering |

Prototyping & Mass Production |

Testing |

High quality services with best-in-class equipments



Electronic Manufacturing Services (EMS) & Custom Power Modules

Key Features

- ISO 6 Clean Room
- Assembling of electronic boards in SMT and PTH technology
- 3D Optical inspection
- X-ray Inspection
- Functional and In-circuit tests
- Burn-In
- Potting and conformal coating service
- Reworking and finishing service



ENGINEERING



PROTOTYPING & MASS PRODUCTION



TRACEABILITY



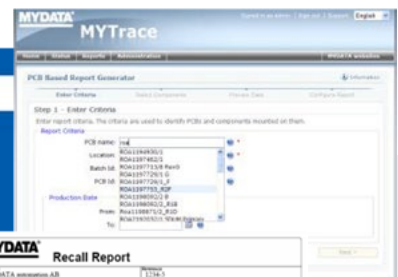
TESTING

Design, Engineering, Traceability and Testing

Engineering, mastering, prototyping and assembly of electronic cards in SMT – THT technologies, including study and production of the mechanical parts.

Tool used

CREO	My analysis
AUTOCAD	My Trace system
Solid Works	Mentor Pads
MATLAB	Orcad



MYDATA Recall Report

MYDATA automation AB
Component: Detector component on location B12
Lot: B0A1197719_R3P
Batch: B12
Production Date: 24/3/2008

Matched components (includes)	Component Batch ID	Total received
B0A1197719_R3P	B12	13743

Batch Information

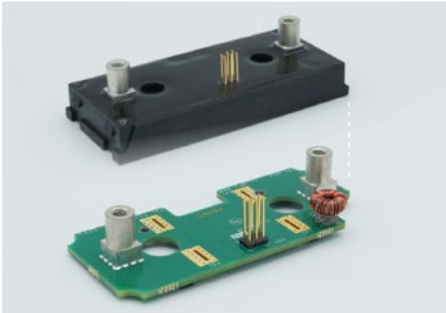
Lot	Batch ID	Total PC Us	Matched PCBs	Matched PC Us (%)	Matched comp
B0A1197719_R3P	B12	13743	13743	100%	13743

Lot: B0A1197719_R3P

PCB Name	Production date	PCB lot	Matched	Matched comp
B0A1197719_R3P	2/27/2008 1:16:00	118	1	1
B0A1197719_R3P	2/27/2008 1:16:00	119	1	1
B0A1197719_R3P	2/27/2008 1:16:00	120	1	1
B0A1197719_R3P	2/27/2008 1:16:00	121	1	1
B0A1197719_R3P	2/27/2008 1:16:00	122	1	1
B0A1197719_R3P	2/27/2008 1:16:00	123	1	1
B0A1197719_R3P	2/27/2008 1:16:00	124	1	1
B0A1197719_R3P	2/27/2008 1:16:00	125	1	1
B0A1197719_R3P	2/27/2008 1:16:00	126	1	1
B0A1197719_R3P	2/27/2008 1:16:00	127	1	1
B0A1197719_R3P	2/27/2008 1:16:00	128	1	1
B0A1197719_R3P	2/27/2008 1:16:00	129	1	1
B0A1197719_R3P	2/27/2008 1:16:00	130	1	1
B0A1197719_R3P	2/27/2008 1:16:00	131	1	1
B0A1197719_R3P	2/27/2008 1:16:00	132	1	1
B0A1197719_R3P	2/27/2008 1:16:00	133	1	1
B0A1197719_R3P	2/27/2008 1:16:00	134	1	1
B0A1197719_R3P	2/27/2008 1:16:00	135	1	1
B0A1197719_R3P	2/27/2008 1:16:00	136	1	1
B0A1197719_R3P	2/27/2008 1:16:00	137	1	1
B0A1197719_R3P	2/27/2008 1:16:00	138	1	1
B0A1197719_R3P	2/27/2008 1:16:00	139	1	1
B0A1197719_R3P	2/27/2008 1:16:00	140	1	1
B0A1197719_R3P	2/27/2008 1:16:00	141	1	1
B0A1197719_R3P	2/27/2008 1:16:00	142	1	1
B0A1197719_R3P	2/27/2008 1:16:00	143	1	1
B0A1197719_R3P	2/27/2008 1:16:00	144	1	1
B0A1197719_R3P	2/27/2008 1:16:00	145	1	1
B0A1197719_R3P	2/27/2008 1:16:00	146	1	1
B0A1197719_R3P	2/27/2008 1:16:00	147	1	1
B0A1197719_R3P	2/27/2008 1:16:00	148	1	1
B0A1197719_R3P	2/27/2008 1:16:00	149	1	1
B0A1197719_R3P	2/27/2008 1:16:00	150	1	1
B0A1197719_R3P	2/27/2008 1:16:00	151	1	1
B0A1197719_R3P	2/27/2008 1:16:00	152	1	1
B0A1197719_R3P	2/27/2008 1:16:00	153	1	1
B0A1197719_R3P	2/27/2008 1:16:00	154	1	1
B0A1197719_R3P	2/27/2008 1:16:00	155	1	1
B0A1197719_R3P	2/27/2008 1:16:00	156	1	1
B0A1197719_R3P	2/27/2008 1:16:00	157	1	1
B0A1197719_R3P	2/27/2008 1:16:00	158	1	1
B0A1197719_R3P	2/27/2008 1:16:00	159	1	1
B0A1197719_R3P	2/27/2008 1:16:00	160	1	1
B0A1197719_R3P	2/27/2008 1:16:00	161	1	1
B0A1197719_R3P	2/27/2008 1:16:00	162	1	1
B0A1197719_R3P	2/27/2008 1:16:00	163	1	1
B0A1197719_R3P	2/27/2008 1:16:00	164	1	1
B0A1197719_R3P	2/27/2008 1:16:00	165	1	1
B0A1197719_R3P	2/27/2008 1:16:00	166	1	1
B0A1197719_R3P	2/27/2008 1:16:00	167	1	1
B0A1197719_R3P	2/27/2008 1:16:00	168	1	1
B0A1197719_R3P	2/27/2008 1:16:00	169	1	1
B0A1197719_R3P	2/27/2008 1:16:00	170	1	1
B0A1197719_R3P	2/27/2008 1:16:00	171	1	1
B0A1197719_R3P	2/27/2008 1:16:00	172	1	1
B0A1197719_R3P	2/27/2008 1:16:00	173	1	1
B0A1197719_R3P	2/27/2008 1:16:00	174	1	1
B0A1197719_R3P	2/27/2008 1:16:00	175	1	1
B0A1197719_R3P	2/27/2008 1:16:00	176	1	1
B0A1197719_R3P	2/27/2008 1:16:00	177	1	1
B0A1197719_R3P	2/27/2008 1:16:00	178	1	1
B0A1197719_R3P	2/27/2008 1:16:00	179	1	1
B0A1197719_R3P	2/27/2008 1:16:00	180	1	1
B0A1197719_R3P	2/27/2008 1:16:00	181	1	1
B0A1197719_R3P	2/27/2008 1:16:00	182	1	1
B0A1197719_R3P	2/27/2008 1:16:00	183	1	1
B0A1197719_R3P	2/27/2008 1:16:00	184	1	1
B0A1197719_R3P	2/27/2008 1:16:00	185	1	1
B0A1197719_R3P	2/27/2008 1:16:00	186	1	1
B0A1197719_R3P	2/27/2008 1:16:00	187	1	1
B0A1197719_R3P	2/27/2008 1:16:00	188	1	1
B0A1197719_R3P	2/27/2008 1:16:00	189	1	1
B0A1197719_R3P	2/27/2008 1:16:00	190	1	1
B0A1197719_R3P	2/27/2008 1:16:00	191	1	1
B0A1197719_R3P	2/27/2008 1:16:00	192	1	1
B0A1197719_R3P	2/27/2008 1:16:00	193	1	1
B0A1197719_R3P	2/27/2008 1:16:00	194	1	1
B0A1197719_R3P	2/27/2008 1:16:00	195	1	1
B0A1197719_R3P	2/27/2008 1:16:00	196	1	1
B0A1197719_R3P	2/27/2008 1:16:00	197	1	1
B0A1197719_R3P	2/27/2008 1:16:00	198	1	1
B0A1197719_R3P	2/27/2008 1:16:00	199	1	1
B0A1197719_R3P	2/27/2008 1:16:00	200	1	1



Custom Power Modules



Static Switch + Ideal Diode

150 A, 48 VDC



Solid State Relay

3PHASE SCR Module
Up to ASA - 600 VAC

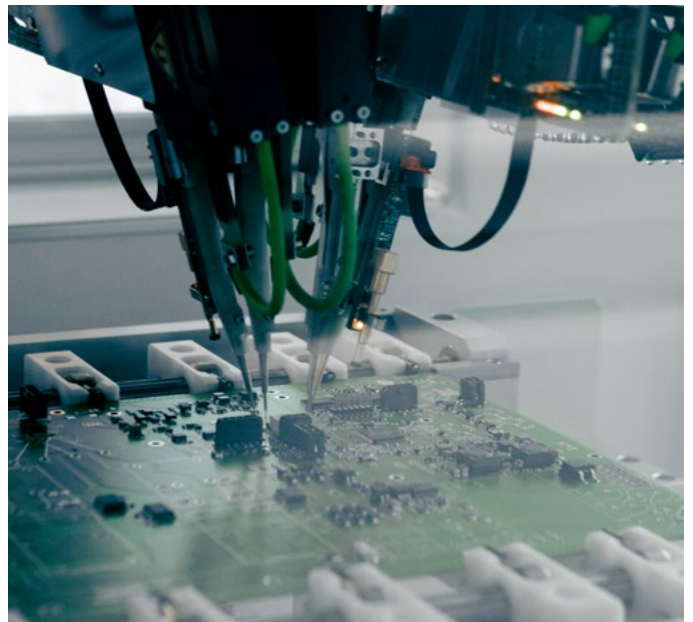


Static Switch

ISO 6 Clean Room Certified

The clean room, dedicated to the realisation of Hi-Rel applications, is certified under ISO 6 class at the operational state.

Operators are constantly trained according to the latest technological innovations and equipped with the breakthrough materials and documentations to provide the best in class service.



Equipments



MY700JP - Jet Printer

Fully software-driven and with complete solder paste volume control. Total control of solder paste deposit size, volume, shape and position.



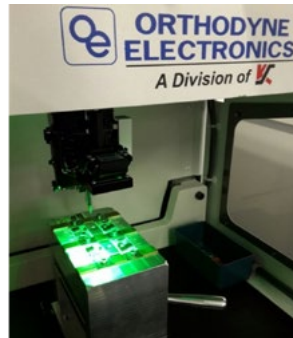
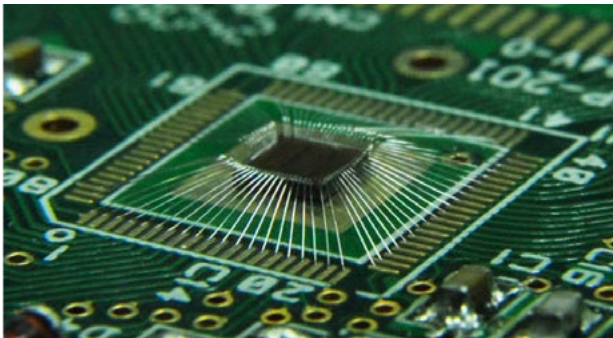
Automatic Pick & Place Line

Mycronic MY200DX-10/14 & MY200SX
More than 1M components mounted in a day in SMD



PVA Delta 8

The Delta 8 is a flexible robotic conformal coating that is ideal for selective coating, conceptualized for maximum flexibility.



Orthodyne M3600 - Wire Bonding Technology

RGM projects, develops and produces custom power modules using several substrates, such as IMS, DCB (both in aluminium oxide and aluminium nitride), and baseplates in aluminium, copper and AlSiC. This technology uses diodes, SCRs, Mosfets, IGBT and SiC in die.



Vapor Phase System VP 6000 with Multi Vacuum Technology

ASSCON's vacuum soldering process combines the average of the vapor-phase with the vacuum process. Simultaneous soldering of active and power components. Soldering of 3D assemblies

Testing Equipments



3D optical inspection

MYPro I50 - 3D A0I



X- ray inspection X- plane analysis

Nordson Quadra™ 3



Testing Equipments

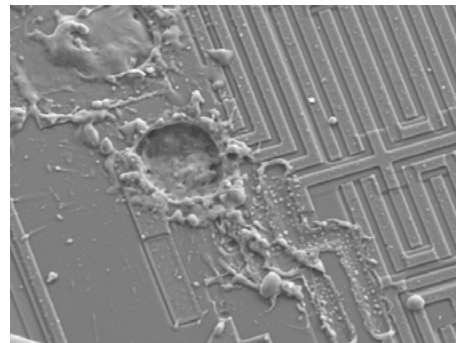
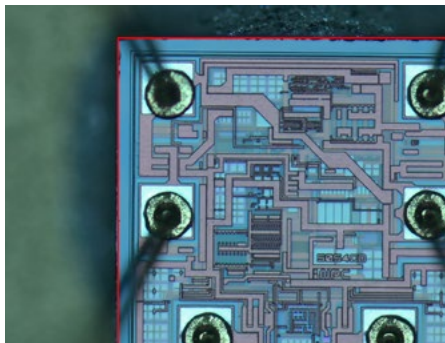
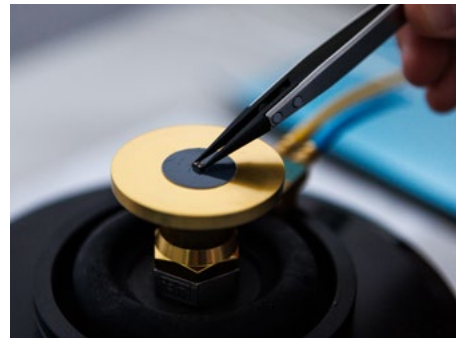
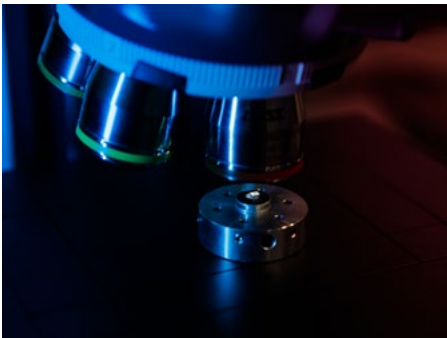
Spea Flying Probe S2 4050

PCB in SMT – THT Technologies



Dedicated Testing LAB

RGM performs Scanning Electron Microscopy (SEM) Analysis of the surface of materials, particles and fibers detecting contamination issues, investigating component failures, identifying unknown particulates or studying the interaction between substances and their substrates.



Quality & Certifications

ISO 9001:2015

Quality

ISO 14001:2015

Environment

ISO 3834: 2021

Welding process management

AS 9120B/EN 9120:2018

Requirements for Aviation, Space and Defence distributor

AS9100D / EN 9100:2018

Development and execution of tests validation for components

EN 15085 class 1

Construction of class 1 components, intended for railway market

EN ISO IEC 80079-34

For products to be used in explosive atmosphere (ATEX)

IPC J-STD-001

Technical operators IPC certified



Why RGM

Heritage

Providing solutions to international leading companies since 1986

Design Support

Turn-key solutions not available on the market with a high level of integration into the customer products: "have it work the way you want"

Value to Customers

Compact, efficient, highly integrated, reliable products, result in customer's lower costs of manufacturing

Contacts

RGM S.r.l. HQ

Via Buccari 19/21
16153 Genova - Italy
Tel: +39 010 609971
Fax: +39 010 6099736
info@rgm.it
www.rgm.it

RGM France Sales Agent

ZI Centr'alp
54, Rue de Corporat
38430 Moirans, France
Mob: +33 (0)688541872
patrice.moreau.ext@rgm.it

RGM North Europe Sales Agent

De Droogmakerij 20E
1851 LX Heiloo,
The Netherlands
Mob. +31 639764618
vincent.deken.ext@rgm.it

RGM Iberia Sales Agent

C. Martín Serrano, 2050629
Sobradiel, Zaragoza, Spain
Mob: +34 656380919
josemaria.santabarbara.
ext@rgm.it